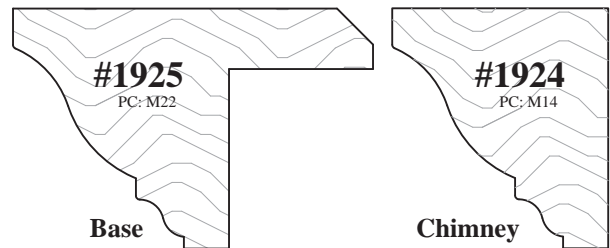


Range Hoods

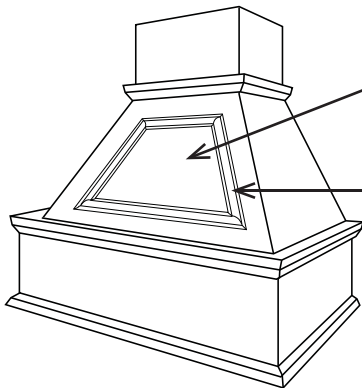
"More design options from WalzCraft!"

Range Hoods

- All **Range Hood** designs are pre-engineered and available with blower and ventilation packages.
- **Blower and Ventilation Units** are not included with the range hood design and must be ordered separately.
- The Blower and Ventilation Units we offer work with our Range Hood designs. If you chose to use another supplier, there will be *no* warranty from WalzCraft should the units not be compatible.
- Customization of all Range Hood designs is available.
- An **Exhaust Fan Access Panel** is available for *most* Range Hoods.
- Part numbers throughout this section also represent the width dimension (ie: T-36 = 36" wide, I-42 = 42" wide).
- **Accent Components** for an accessory to your range hood are available and must be ordered separately.
- Standard Stile and Rail Profiles for Range Hoods: **SR100, SR102, SR107** and **SR119**.
- Standard Center Panel Profiles for Range Hoods: **PR300-32, PR302-25, PR303-32, PR305-32** and **PR324-10**.
- Standard **Base and Chimney Molding Profiles** are shown to the right. (Pricing for these moldings can be found in our Specification Catalog.)
- Simulated Distressing and Finishing options are available.
- There is a Crating Charge for all Range Hood designs.



Removable Exhaust Fan Access Panel Options

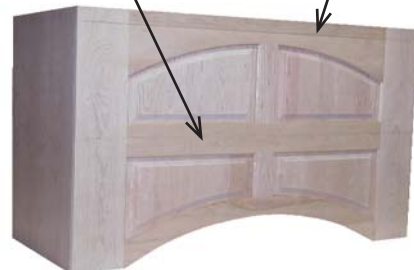


- Removable **Exhaust Fan Access Panel** (Available on **G, I, J** and **T** Series Range Hoods for an additional charge).
- When ordering, please specify the Range Hood Series and note the Exhaust Fan Access Panel option.
- To cover the removable access panel, an applied molding is used to complete the look.

• **Removable Panel** for easy access to ventilation or duct work. (This is a standard feature on the **M, Q, S** and **W** Series Range Hoods.)

- When ordering, there is no need to specify an exhaust fan access panel option.

- The removable panel on the **M, Q, S** and **W** Series Range Hoods is held in place with clips. When assembled, the visible seam on the top rail can be concealed with the addition of a Crown Molding (sold separately). The seam on the center rail will be concealed with a shelf (standard feature that is included in the price).



The installation of Range Hood and Liner Ventilation Systems are subject to local building code construction guidelines. It is your responsibility to ensure that the Range Hood, Liner and Ventilator do meet your local building code standards.



WalzCraft[®].com

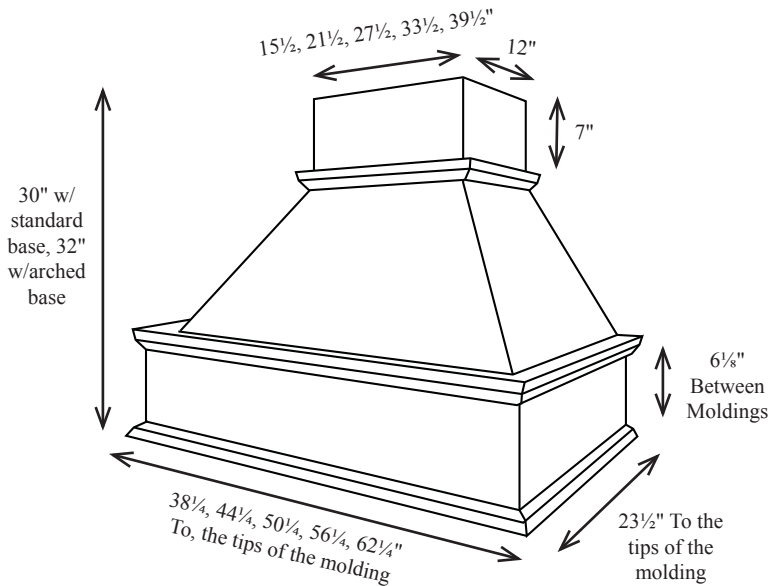


(Phone) 1-800-237-1326 7:00AM - 4:30PM CST (24 Hour Fax) 1-608-781-3667

Range Hoods

"Quality on time, every time!"

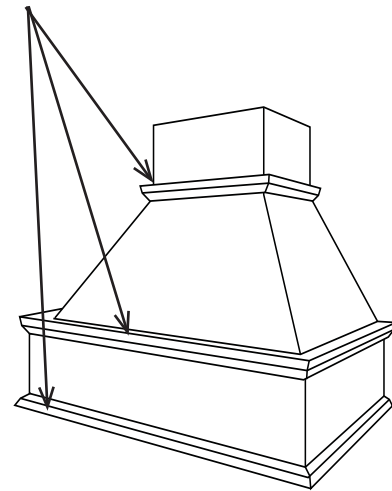
G-Series Range Hoods



G-Series hoods are available in standard widths to fit up to a 60" cook top. Custom widths are available, custom depths are not. The standard hood accommodates an 8 foot ceiling, although the chimney can be trimmed. Additional charges apply for extended chimney heights.

G-Series hoods have an applied molding on the removable exhaust fan access panel. This provides an elegant look and aids in installation.

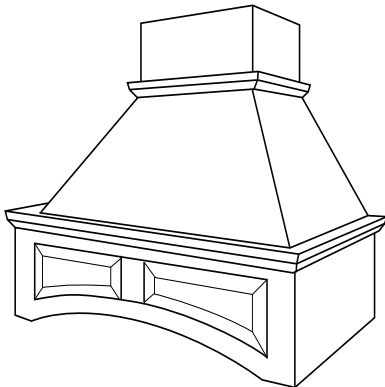
The G-Series hoods also come standard with a decorative molding.



Wood Species	G-Series Part Number				
	G-36	G-42	G-48	G-54	G-60
Alder	See our Specification Catalog for Pricing				
Birch					
Cherry					
Hickory					
Maple-Hard					
Oak-Red					
Pine-Knotty					
Sq Ft for Finishing	38	41	45	49	53

* Add 2 1/4" to the width listed for the overall width of the hood, measured tip to tip of the applied decorative molding.

To further accessorize your hood, please refer to our Specification Catalog for Accent Components.



Wood Species	G-Series Part Number				
	GRA-36	GRA-42	GRA-48	GRA-54	GRA-60
Alder	See our Specification Catalog for Pricing				
Birch					
Cherry					
Hickory					
Maple-Hard					
Oak-Red					
Pine-Knotty					
Sq Ft for Finishing	40	44	48	52	56

* Add 2 1/4" to the width listed for the overall width of the hood, measured tip to tip of the applied decorative molding.

The installation of Range Hood and Liner Ventilation Systems are subject to local building code construction guidelines. It is your responsibility to ensure that the Range Hood, Liner and Ventilator do meet your local building code standards.



WalzCraft[®].com

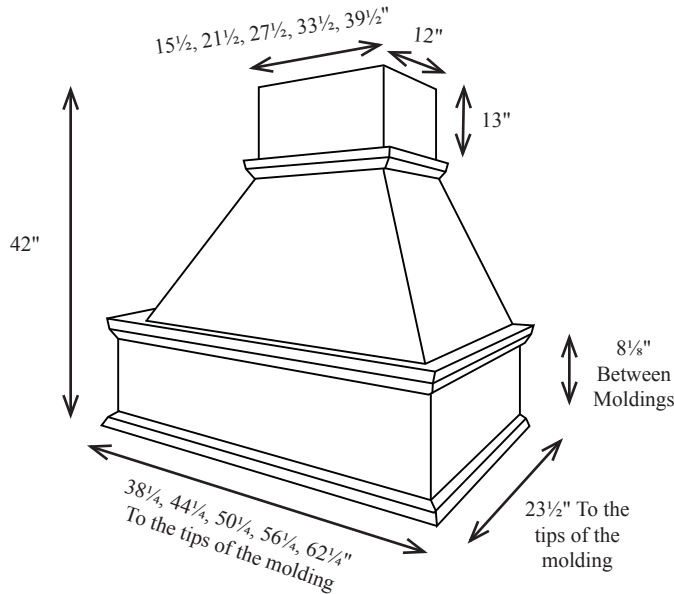


(Phone) 1-800-237-1326 7:00AM - 4:30PM CST (24 Hour Fax) 1-608-781-3667

Range Hoods

"Call for a plant tour, it is worth the trip!"

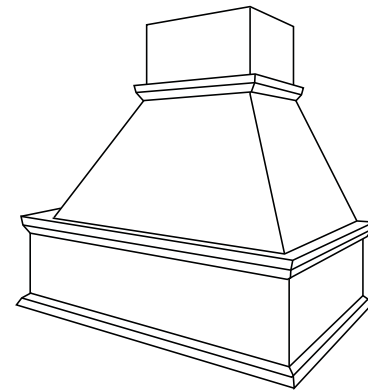
T-Series Range Hoods



T-Series hoods are available in standard widths to fit up to a 60" cook top. Custom widths are available, custom depths are not. The standard hood accommodates a 9 foot ceiling, although the chimney can be trimmed. Additional charges apply for extended chimney heights.

T-Series hoods have an applied molding on the removable exhaust fan access panel. This provides an elegant look and aids in installation.

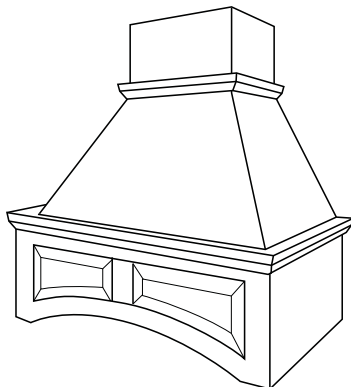
The T-Series hoods also come standard with a decorative molding.



Wood Species	T-Series Part Number				
	T-36	T-42	T-48	T-54	T-60
Alder	See our Specification Catalog for Pricing				
Birch					
Cherry					
Hickory					
Maple-Hard					
Oak-Red					
Pine-Knotty					
Sq Ft for Finishing	53	58	63	68	74

* Add 2 1/4" to the width listed for the overall width of the hood, measured tip to tip of the applied decorative molding.

To further accessorize your hood, please refer to our Specification Catalog for Accent Components.



Wood Species	T-Series Part Number				
	TRA-36	TRA-42	TRA-48	TRA-54	TRA-60
Alder	See our Specification Catalog for Pricing				
Birch					
Cherry					
Hickory					
Maple-Hard					
Oak-Red					
Pine-Knotty					
Sq Ft for Finishing	53	58	63	68	74

* Add 2 1/4" to the width listed for the overall width of the hood, measured tip to tip of the applied decorative molding.

The installation of Range Hood and Liner Ventilation Systems are subject to local building code construction guidelines. It is your responsibility to ensure that the Range Hood, Liner and Ventilator do meet your local building code standards.



WalzCraft[®].com

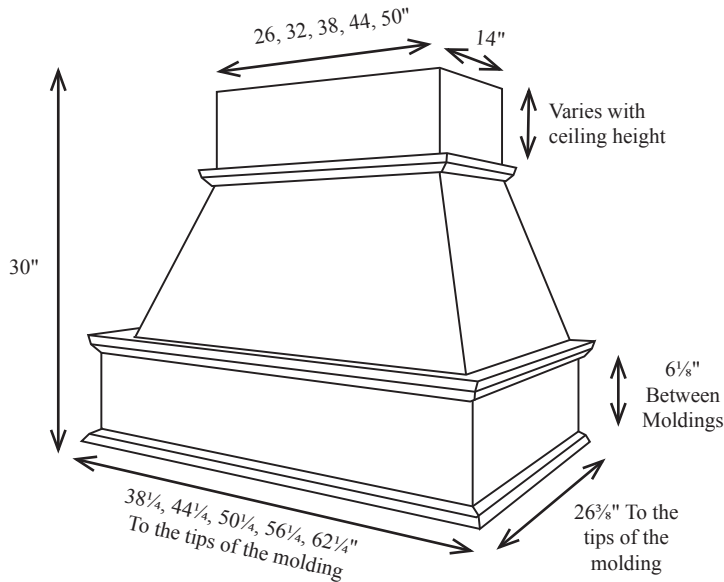


(Phone) 1-800-237-1326 7:00AM - 4:30PM CST (24 Hour Fax) 1-608-781-3667

Range Hoods

"Outstanding quality at competitive prices!"

I-Series Range Hoods

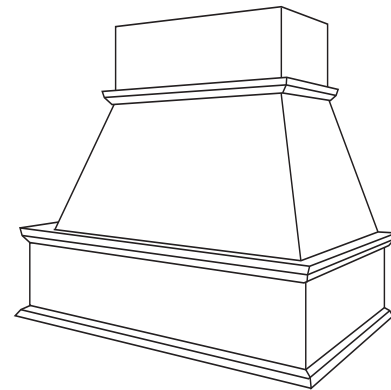


I-Series hoods are available in standard widths to fit up to a 60" cook top. Custom widths are available, custom depths are not. The hood design allows differing chimney heights to accommodate all standard ceiling heights.

Island hoods should be 6" wider than the cooking surface if possible.

I-Series hoods have an applied molding on the removable exhaust fan access panel.

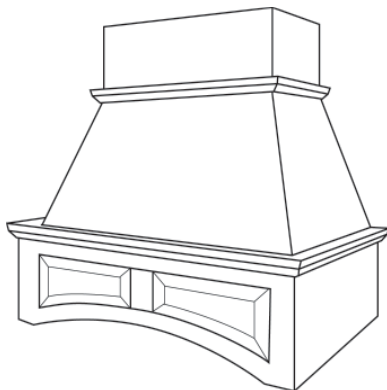
The I-Series hoods also come standard with a decorative molding.



Wood Species	I-Series Part Number				
	I-36	I-42	I-48	I-54	I-60
Alder	See our Specification Catalog for Pricing				
Birch					
Cherry					
Hickory					
Maple-Hard					
Oak-Red					
Pine-Knotty					
Sq Ft for Finishing	41	45	50	54	58

* Add 2 1/4" to the width listed for the overall width of the hood, measured tip to tip of the applied decorative molding.

To further accessorize your hood, please refer to our Specification Catalog for Accent Components.



Wood Species	I-Series Part Number				
	IRA-36	IRA-42	IRA-48	IRA-54	IRA-60
Alder	See our Specification Catalog for Pricing				
Birch					
Cherry					
Hickory					
Maple-Hard					
Oak-Red					
Pine-Knotty					
Sq Ft for Finishing	41	45	50	54	58

* Add 2 1/4" to the width listed for the overall width of the hood, measured tip to tip of the applied decorative molding.

The installation of Range Hood and Liner Ventilation Systems are subject to local building code construction guidelines. It is your responsibility to ensure that the Range Hood, Liner and Ventilator do meet your local building code standards.



WalzCraft[®].com

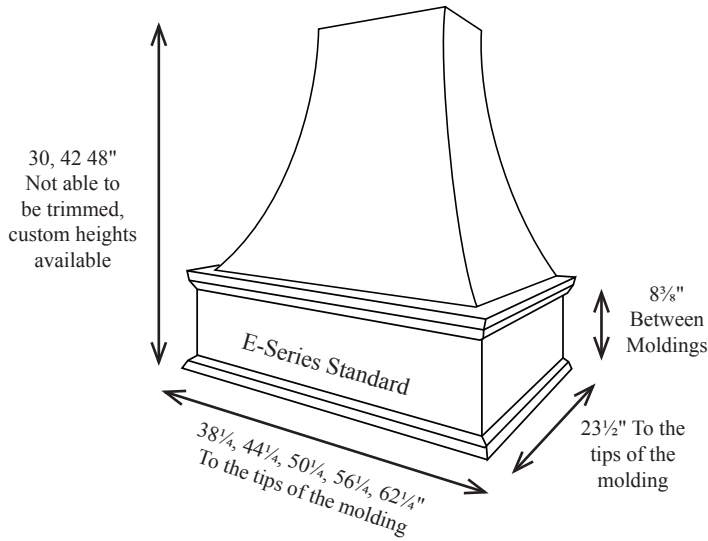


(Phone) 1-800-237-1326 7:00AM - 4:30PM CST (24 Hour Fax) 1-608-781-3667

Range Hoods

"Ordering from WalzCraft is easy!"

E-Series Range Hoods



E-Series hoods are available in standard widths to fit up to a 60" cook top. Custom widths are available, custom depths are not. This hood has a stain grade curved top. The hood comes in three standard heights: 30, 42 and 48". The hood should not be trimmed in the field. Custom heights are available.

The E-Series hoods also come standard with a decorative molding.

3/8" banded lauan face is not suitable for painting.

Wood Species	E-Series Part Number														
	E-3630	E-3642	E-3648	E-4230	E-4242	E-4248	E-4830	E-4842	E-4848	E-5430	E-5442	E-5448	E-6030	E-6042	E-6048
Alder	See our Specification Catalog for Pricing														
Birch															
Cherry															
Hickory															
Maple-Hard															
Oak-Red															
Pine-Knotty															
SF for Finishing	38	53	60	41	58	66	45	63	72	49	68	78	53	74	84

* Add 2 1/4" to the width listed for the overall width of the hood, measured tip to tip of the applied decorative molding.

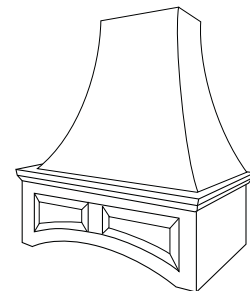
To further accessorize your hood, please refer to our Specification Catalog for Accent Components.

Wood Species	E-Series Part Number							
	ERA-3630	ERA-3642	ERA-3648	ERA-4230	ERA-4242	ERA-4248	ERA-4830	ERA-4842
Alder	See our Specification Catalog for Pricing							
Birch								
Cherry								
Hickory								
Maple-Hard								
Oak-Red								
Pine-Knotty								
SF for Finishing	38	53	60	41	58	66	45	63

* Add 2 1/4" to the width listed for the overall width of the hood, measured tip to tip of the applied decorative molding.

Wood Species	E-Series Part Number						
	ERA-4848	ERA-5430	ERA-5442	ERA-5448	ERA-6030	ERA-6042	ERA-6048
Alder	See our Specification Catalog for Pricing						
Birch							
Cherry							
Hickory							
Maple-Hard							
Oak-Red							
Pine-Knotty							
SF for Finishing	72	49	68	78	53	74	84

* Add 2 1/4" to the width listed for the overall width of the hood, measured tip to tip of the applied decorative molding.



E-Series Raised Arch

The installation of Range Hood and Liner Ventilation Systems are subject to local building code construction guidelines. It is your responsibility to ensure that the Range Hood, Liner and Ventilator do meet your local building code standards.



WalzCraft.com

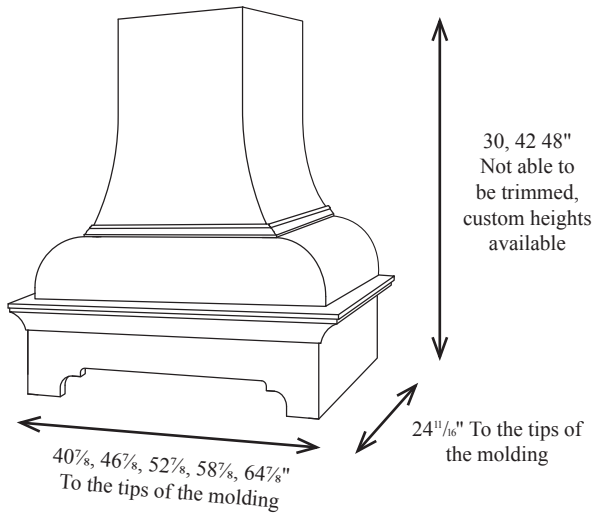


(Phone) 1-800-237-1326 7:00AM - 4:30PM CST (24 Hour Fax) 1-608-781-3667

Range Hoods

"Finishing is also available!"

D-Series Range Hood



D-Series hoods are available in standard widths to fit up to a 60" cook top. Custom widths are available, custom depths are not. This hood has a stain grade curved top. The hood comes in three standard heights: 30, 42 and 48". The hood should not be trimmed in the field. Custom heights are available. The decorative panel base is standard on the D-Series hood. The D-Series hoods also come standard with a decorative molding.

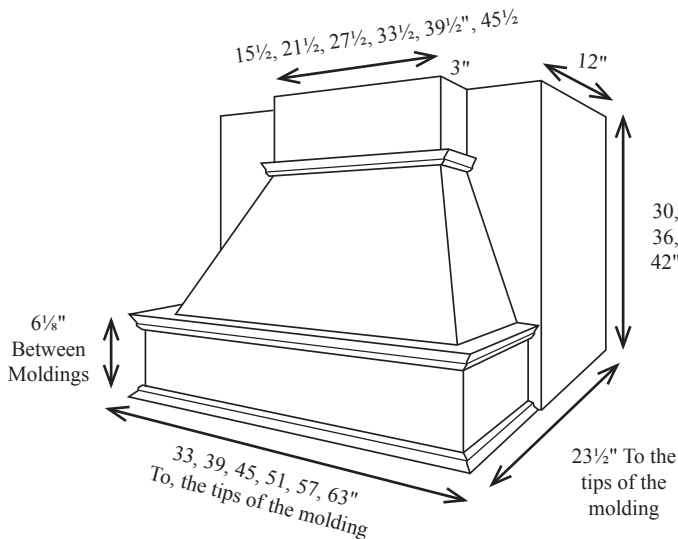
3/8" bended lauan face is not suitable for painting.

Wood Species	D-Series Part Number														
	D-3630	D-3642	D-3648	D-4230	D-4242	D-4248	D-4830	D-4842	D-4848	D-5430	D-5442	D-5448	D-6030	D-6042	D-6048
Alder	See our Specification Catalog for Pricing														
Birch															
Cherry															
Hickory															
Maple-Hard															
Oak-Red															
Pine-Knotty															
SF for Finishing	38	53	60	41	58	66	45	63	72	49	68	78	53	74	84

* Add 2 1/4" to the width listed for the overall width of the hood, measured tip to tip of the applied decorative molding.

To further accessorize your hood, please refer to our Specification Catalog for Accent Components.

J-Series Range Hoods



J-Series hoods are designed to mount between cabinets. It gives the popular chimney style look while keeping the run of cabinets continuous. These are available in sizes to fit up to a 60" range. Custom heights are available, custom depths are not. These hoods must be 3" wider than the range.

Order the liner smaller than the hood for proper fit, ie: 39" hoods get 36" liners.

J-Series hoods have an applied molding on the removable exhaust fan access panel.

The J-Series hoods also come standard with a decorative molding.

The installation of Range Hood and Liner Ventilation Systems are subject to local building code construction guidelines. It is your responsibility to ensure that the Range Hood, Liner and Ventilator do meet your local building code standards.



WalzCraft.com



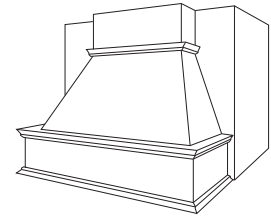
(Phone) 1-800-237-1326 7:00AM - 4:30PM CST (24 Hour Fax) 1-608-781-3667

Range Hoods

"WalzCraft, when quality is expected!"

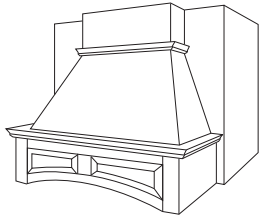
J-Series Range Hoods...continued

Wood Species	J-Series Part Number																	
	J-3330	J-3336	J-3342	J-3930	J-3936	J-3942	J-4530	J-4536	J-4542									
Alder	See our Specification Catalog for Pricing																	
Birch																		
Cherry																		
Hickory																		
Maple-Hard																		
Oak-Red																		
Pine-Knotty																		
SF for Fin										36	43	50	39	47	55	43	52	60
* Add 2 1/4" to the width listed for the overall width of the hood, measured tip to tip of the applied decorative molding.																		



Wood Species	J-Series Part Number																	
	J-5130	J-5136	J-5142	J-5730	J-5736	J-5742	J-6330	J-6336	J-6342									
Alder	See our Specification Catalog for Pricing																	
Birch																		
Cherry																		
Hickory																		
Maple-Hard																		
Oak-Red																		
Pine-Knotty																		
SF for Fin										47	56	66	51	61	71	54	65	76
* Add 2 1/4" to the width listed for the overall width of the hood, measured tip to tip of the applied decorative molding.																		

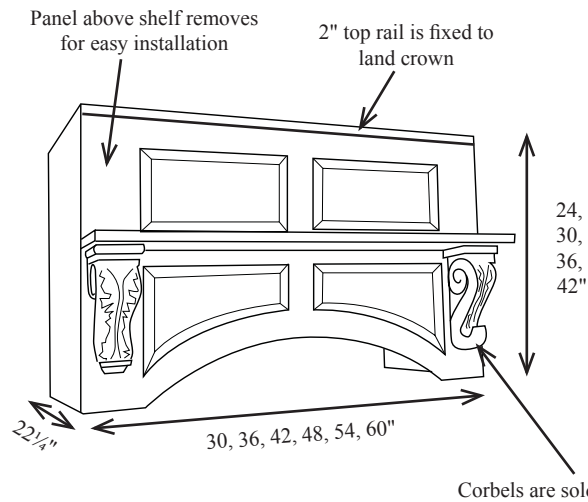
To further accessorize your hood, please refer to our Specification Catalog for Accent Components.



Wood Species	J-Series Part Number																	
	JRA-3330	JRA-3336	JRA-3342	JRA-3930	JRA-3936	JRA-3942	JRA-4530	JRA-4536	JRA-4542									
Alder	See our Specification Catalog for Pricing																	
Birch																		
Cherry																		
Hickory																		
Maple-Hard																		
Oak-Red																		
Pine-Knotty																		
SF for Fin										36	43	50	39	47	55	43	52	60
* Add 2 1/4" to the width listed for the overall width of the hood, measured tip to tip of the applied decorative molding.																		

Wood Species	J-Series Part Number																	
	JRA-5130	JRA-5136	JRA-5142	JRA-5730	JRA-5736	JRA-5742	JRA-6330	JRA-6336	JRA-6342									
Alder	See our Specification Catalog for Pricing																	
Birch																		
Cherry																		
Hickory																		
Maple-Hard																		
Oak-Red																		
Pine-Knotty																		
SF for Fin										47	56	66	51	61	71	54	65	76
* Add 2 1/4" to the width listed for the overall width of the hood, measured tip to tip of the applied decorative molding.																		

M-Series Range Hood



M-Series hoods are constructed from solid wood and veneer core plywood. These are available in sizes to fit up to a 60" range. Custom widths and heights are available, custom depths are not.

A special feature on the M-Series hood has a removable panel, which is a no cost option.

M-Series hoods come standard with a shelf, to help conceal the removable panel option. Adding a corbel or shelf support will further accessorize the hood. Accent accessories must be ordered separately.

The installation of Range Hood and Liner Ventilation Systems are subject to local building code construction guidelines. It is your responsibility to ensure that the Range Hood, Liner and Ventilator do meet your local building code standards.



WalzCraft.com



(Phone) 1-800-237-1326 7:00AM - 4:30PM CST (24 Hour Fax) 1-608-781-3667

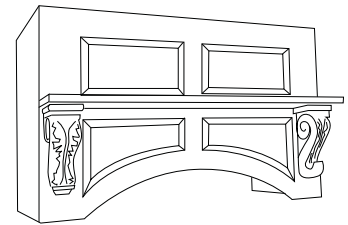
Range Hoods

"WalzCraft has Accent Components to complement your cabinetry needs."

M-Series Range Hoods...continued

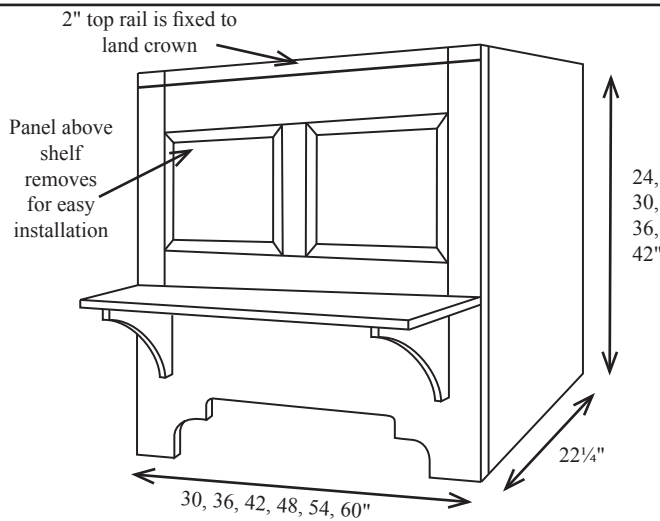
Wood Species	M-Series Part Number											
	M-3024	M-3030	M-3036	M-3042	M-3624	M-3630	M-3636	M-3642	M-4224	M-4230	M-4236	M-4242
Alder	See our Specification Catalog for Pricing											
Birch												
Cherry												
Hickory												
Maple-Hard												
Oak-Red												
Pine-Knotty												
SF for Fin												

Wood Species	M-Series Part Number											
	M-4824	M-4830	M-4836	M-4842	M-5424	M-5430	M-5436	M-5442	M-6024	M-6030	M-6036	M-6042
Alder	See our Specification Catalog for Pricing											
Birch												
Cherry												
Hickory												
Maple-Hard												
Oak-Red												
Pine-Knotty												
SF for Fin												



To further accessorize your hood, please refer to our Specification Catalog for Accent Components.

Q-Series Range Hood

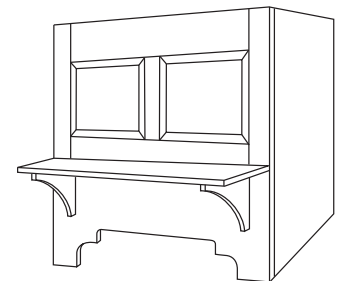


Q-Series hoods are constructed from solid wood and veneer core plywood. These are available in sizes to fit up to a 60" range. Custom widths and heights are available, custom depths are not. A special feature on the Q-Series hood has a removable panel, which is a no cost option.

Q-Series hoods come standard with a shelf and simple bracket supports, to help conceal the removable panel option.

Wood Species	Q-Series Part Number											
	QBKT-3024	QBKT-3030	QBKT-3036	QBKT-3042	QBKT-3624	QBKT-3630	QBKT-3636	QBKT-3642	QBKT-4224	QBKT-4230	QBKT-4236	QBKT-4242
Alder	See our Specification Catalog for Pricing											
Birch												
Cherry												
Hickory												
Maple-Hard												
Oak-Red												
Pine-Knotty												
SF for Fin												

Wood Species	Q-Series Part Number											
	QBKT-4824	QBKT-4830	QBKT-4836	QBKT-4842	QBKT-5424	QBKT-5430	QBKT-5436	QBKT-5442	QBKT-6024	QBKT-6030	QBKT-6036	QBKT-6042
Alder	See our Specification Catalog for Pricing											
Birch												
Cherry												
Hickory												
Maple-Hard												
Oak-Red												
Pine-Knotty												
SF for Fin												



The installation of Range Hood and Liner Ventilation Systems are subject to local building code construction guidelines. It is your responsibility to ensure that the Range Hood, Liner and Ventilator do meet your local building code standards.



WalzCraft.com

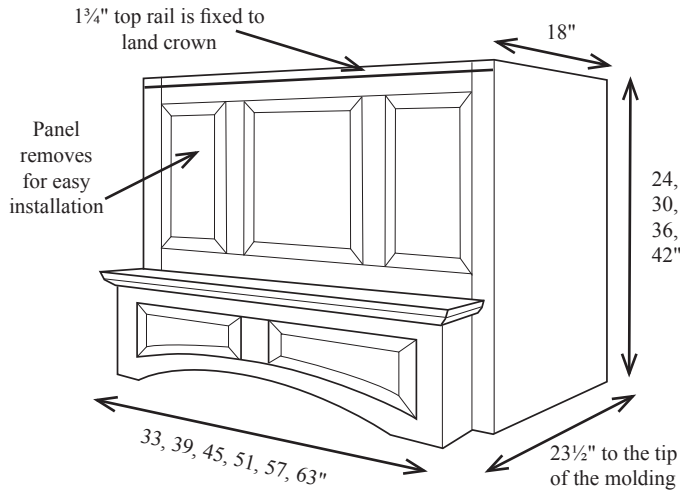


(Phone) 1-800-237-1326 7:00AM - 4:30PM CST (24 Hour Fax) 1-608-781-3667

Range Hoods

"The best warranty in the business!"

S-Series Range Hoods



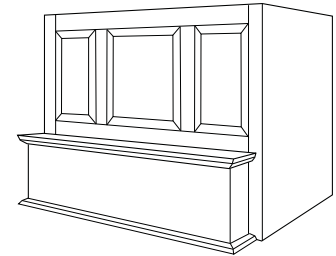
S-Series hoods are available in standard widths to fit up to a 60" cook top. These are constructed from solid wood and veneer core plywood. The panel above the shelf on the S-Series hoods removes for easier installation. There is a fixed 1 3/4" rail across the top of the hood to mount crown molding to.

The S-Series hoods also come standard with a decorative molding.

Order the liner 3" smaller than the hood for proper fit, ie: 39" hoods get 36" liners.

Wood Species	S-Series Part Number											
Alder	S-3324	S-3330	S-3336	S-3342	S-3924	S-3930	S-3936	S-3942	S-4524	S-4530	S-4536	S-4542
Birch												
Cherry												
Hickory												
Maple-Hard												
Oak-Red												
Pine-Knotty												
SF for Fin	29	36	43	50	32	39	47	55	35	43	52	60

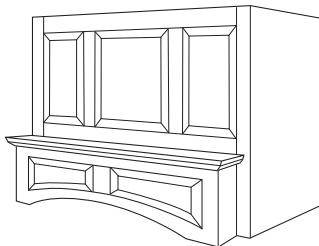
See our Specification Catalog for Pricing



Wood Species	S-Series Part Number											
Alder	S-5124	S-5130	S-5136	S-5142	S-5724	S-5730	S-5736	S-5742	S-6324	S-6330	S-6336	S-6342
Birch												
Cherry												
Hickory												
Maple-Hard												
Oak-Red												
Pine-Knotty												
SF for Fin	38	47	56	66	41	51	61	71	44	54	65	76

See our Specification Catalog for Pricing

To further accessorize your hood, please refer to our Specification Catalog for Accent Components.



Wood Species	S-Series Part Number											
Alder	SRA-3324	SRA-3330	SRA-3336	SRA-3342	SRA-3924	SRA-3930	SRA-3936	SRA-3942	SRA-4524	SRA-4530	SRA-4536	SRA-4542
Birch												
Cherry												
Hickory												
Maple-Hard												
Oak-Red												
Pine-Knotty												
SF for Fin	29	36	43	50	32	39	47	55	35	43	52	60

See our Specification Catalog for Pricing

Wood Species	S-Series Part Number											
Alder	SRA-5124	SRA-5130	SRA-5136	SRA-5142	SRA-5724	SRA-5730	SRA-5736	SRA-5742	SRA-6324	SRA-6330	SRA-6336	SRA-6342
Birch												
Cherry												
Hickory												
Maple-Hard												
Oak-Red												
Pine-Knotty												
SF for Fin	38	47	56	66	41	51	61	71	44	54	65	76

See our Specification Catalog for Pricing

The installation of Range Hood and Liner Ventilation Systems are subject to local building code construction guidelines. It is your responsibility to ensure that the Range Hood, Liner and Ventilator do meet your local building code standards.



WalzCraft.com

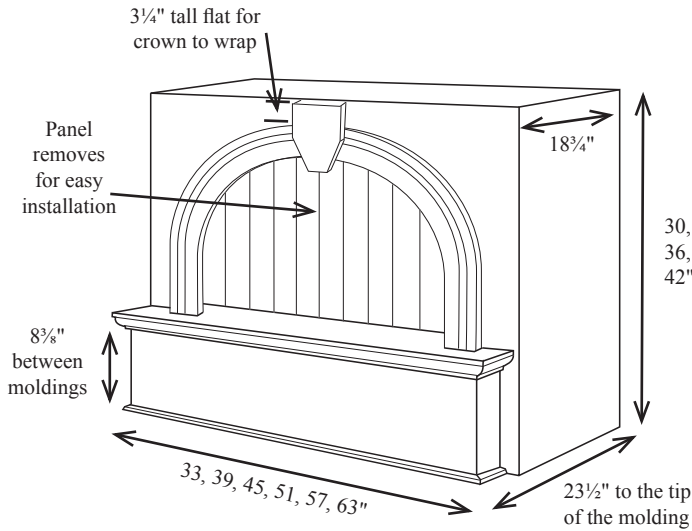


(Phone) 1-800-237-1326 7:00AM - 4:30PM CST (24 Hour Fax) 1-608-781-3667

Range Hoods

"Visit our Web Site at www.WalzCraft.com."

A-Series Range Hoods



A-Series hoods are available in standard widths to fit up to a 60" cook top. These are constructed from solid wood and veneer core plywood. The bead board panel on the A-Series hoods removes for easier installation.

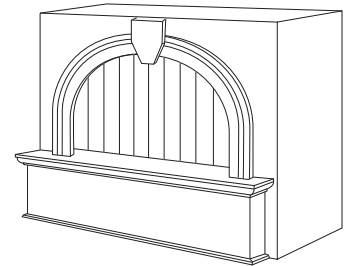
The A-Series hoods also come standard with a decorative molding.

Order the liner 3" smaller than the hood for proper fit, ie: 39" hoods get 36" liners.

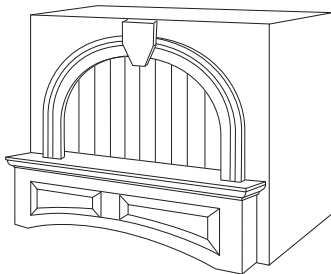
A-Series hoods are not available in 24" height.

Wood Species	A-Series Part Number																	
Alder	A-3330	A-3336	A-3342	A-3930	A-3936	A-3942	A-4530	A-4536	A-4542									
Birch	See our Specification Catalog for Pricing																	
Cherry																		
Hickory																		
Maple-Hard																		
Oak-Red																		
Pine-Knotty																		
SF for Fin										36	43	50	39	47	55	43	52	60

Wood Species	A-Series Part Number																	
Alder	A-5130	A-5136	A-5142	A-5730	A-5736	A-5742	A-6330	A-6336	A-6342									
Birch	See our Specification Catalog for Pricing																	
Cherry																		
Hickory																		
Maple-Hard																		
Oak-Red																		
Pine-Knotty																		
SF for Fin										47	56	66	51	61	71	54	65	76



To further accessorize your hood, please refer to our Specification Catalog for Accent Components.



Wood Species	A-Series Part Number																	
Alder	ARA-3330	ARA-3336	ARA-3342	ARA-3930	ARA-3936	ARA-3942	ARA-4530	ARA-4536	ARA-4542									
Birch	See our Specification Catalog for Pricing																	
Cherry																		
Hickory																		
Maple-Hard																		
Oak-Red																		
Pine-Knotty																		
SF for Fin										36	43	50	39	47	55	43	52	60

Wood Species	A-Series Part Number																	
Alder	ARA-5130	ARA-5136	ARA-5142	ARA-5730	ARA-5736	ARA-5742	ARA-6330	ARA-6336	ARA-6342									
Birch	See our Specification Catalog for Pricing																	
Cherry																		
Hickory																		
Maple-Hard																		
Oak-Red																		
Pine-Knotty																		
SF for Fin										47	56	66	51	61	71	54	65	76

The installation of Range Hood and Liner Ventilation Systems are subject to local building code construction guidelines. It is your responsibility to ensure that the Range Hood, Liner and Ventilator do meet your local building code standards.



WalzCraft.com

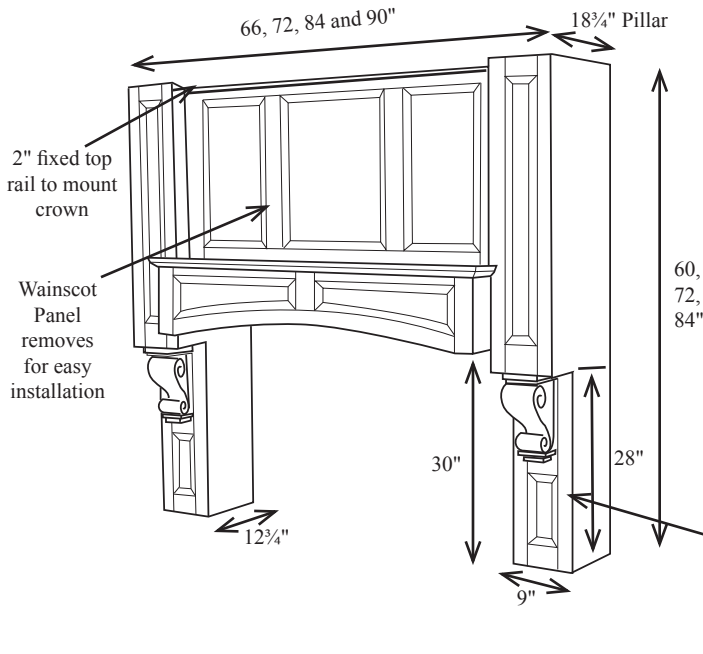


(Phone) 1-800-237-1326 7:00AM - 4:30PM CST (24 Hour Fax) 1-608-781-3667

Range Hoods

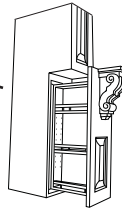
“Single Source Provider.”

W-Series Range Hoods



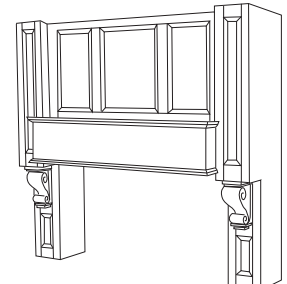
W-Series hoods are the most elegant of kitchens mimicking the cooking hearths of times past. The W Series is constructed from solid wood and veneer core plywood. The W-Series hoods come down to the counter, **you must verify that there is sufficient distance between the column and the range to meet local code.** In most areas, tiling the inside of the column eliminates this requirement. Custom sizes are available.

The W-Series hoods also come standard with a decorative molding.

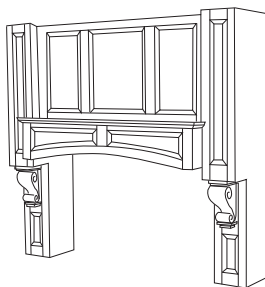


Spice Rack within lower cabinet. Available with full height door or small door & corbel option, which pulls out to access the spice rack. (Corbel is sold separately.)

Wood Species	W-Series Part Number											
	W-6660	W-7260	W-8460	W-9060	W-6672	W-7272	W-8472	W-9072	W-6684	W-7284	W-8484	W-9084
Alder	See our Specification Catalog for Pricing											
Birch												
Cherry												
Hickory												
Maple-Hard												
Oak-Red												
Pine-Knotty												
Sq Ft for Finishing	92	99	112	118	111	118	134	142	129	138	156	165



To further accessorize your hood, please refer to our Specification Catalog for Accent Components.



Wood Species	W- Series Part Number											
	WRA-6660	WRA-7260	WRA-8460	WRA-9060	WRA-6672	WRA-7272	WRA-8472	WRA-9072	WRA-6684	WRA-7284	WRA-8484	WRA-9084
Alder	See our Specification Catalog for Pricing											
Birch												
Cherry												
Hickory												
Maple-Hard												
Oak-Red												
Pine-Knotty												
SF for Finishing	92	99	112	118	111	118	134	142	129	138	156	165

The installation of Range Hood and Liner Ventilation Systems are subject to local building code construction guidelines. It is your responsibility to ensure that the Range Hood, Liner and Ventilator do meet your local building code standards.



WalzCraft[®].com

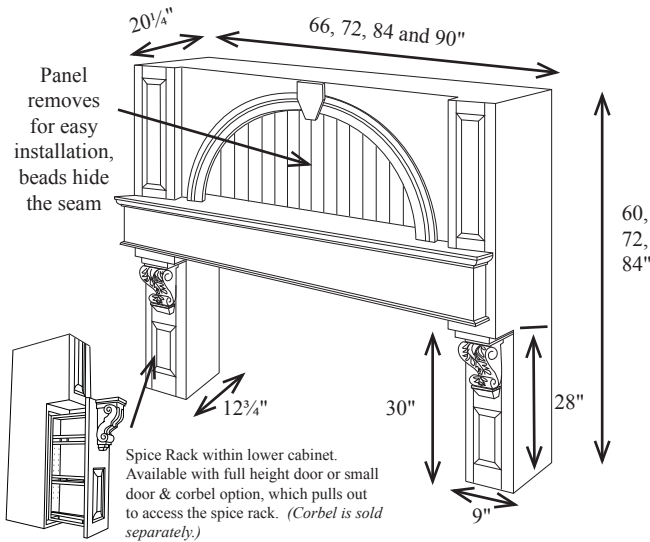


(Phone) 1-800-237-1326 7:00AM - 4:30PM CST (24 Hour Fax) 1-608-781-3667

Range Hoods

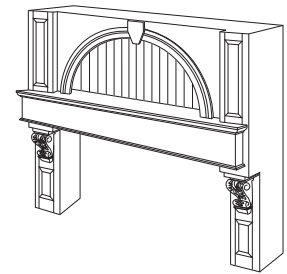
"One Stop Shopping for your Finishing needs!"

O-Series Range Hoods



O-Series hoods are rich with detail. The display niche and large crown molding wrapped mantel shelf make a statement in any kitchen. The bead board panel on the O-Series removes to give access for easier installation. Constructed from solid wood and veneer core plywood. The O-Series hoods come down to the counter, **you must verify that there is sufficient distance between the column and the range to meet local code.** In most areas, tiling the inside of the column eliminates this requirement. Recess in the display niche fits 3" puck lights.

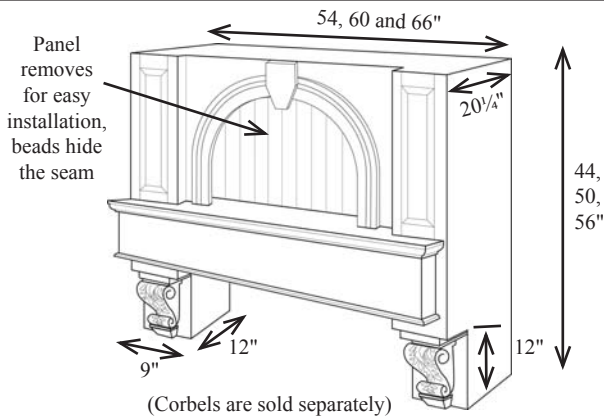
The O-Series hoods also come standard with a decorative molding.



Wood Species	O-Series Part Number											
Alder	O-6660	O-7260	O-8460	O-9060	O-6672	O-7272	O-8472	O-9072	O-6684	O-7284	O-8484	O-9084
Birch												
Cherry												
Hickory												
Maple-Hard												
Oak-Red												
Pine-Knotty												
SF for Finishing	93	100	113	119	112	120	135	143	130	140	158	167

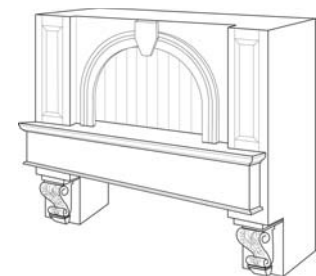
See our Specification Catalog for Pricing

L-Series Range Hoods



L-Series hoods are an elegant hearth style hood with a generous display niche. The large crown wrapped mantel shelf makes a statement in any kitchen. The bead board panel on the L-Series removes to give access for ventilation installation. Constructed from solid wood and veneer core plywood. Recess in the display niche is sized to fit 3" puck lights.

The L-Series hoods also come standard with a decorative molding.



Wood Species	L-Series Part Number									
Alder	L-5444	L-6044	L-6644	L-5450	L-6050	L-6650	L-5456	L-6056	L-6656	
Birch										
Cherry										
Hickory										
Maple-Hard										
Oak-Red										
Pine-Knotty										
SF for Finishing	58	63	68	66	71	77	87	94	101	

See our Specification Catalog for Pricing

The installation of Range Hood and Liner Ventilation Systems are subject to local building code construction guidelines. It is your responsibility to ensure that the Range Hood, Liner and Ventilator do meet your local building code standards.



WalzCraft.com

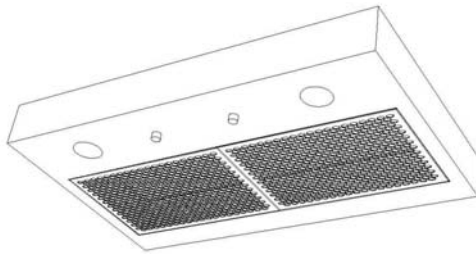


(Phone) 1-800-237-1326 7:00AM - 4:30PM CST (24 Hour Fax) 1-608-781-3667

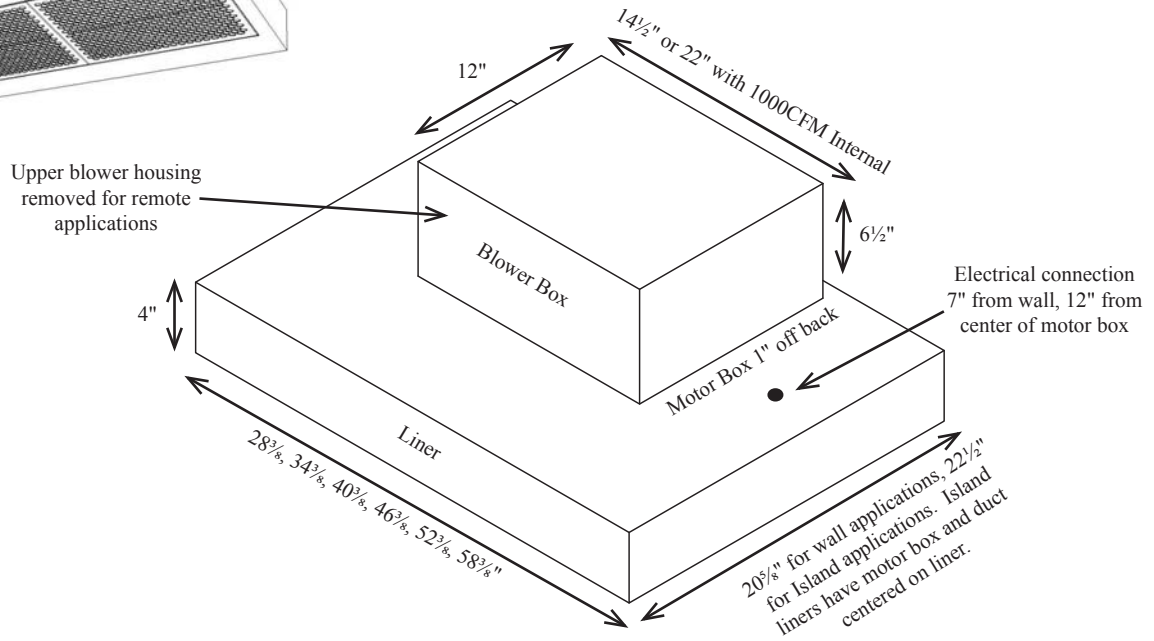
Range Hoods

"The difference is in the details!"

Range Hood Liners / Ventilator Units



Ventilation Units and Stainless Steel Liners are not included with the Range Hood designs, however, these units can be purchased separately from WalzCraft. Ordering guidelines can be found below. These units are manufactured by Modern-Aire.



Model #	CFM Rating	Size of Liner that Fits Hood / Actual Width of Liner					
		30 / 28 ³ / ₈ "	36 / 34 ³ / ₈ "	42 / 40 ³ / ₈ "	48 / 46 ³ / ₈ "	54 / 52 ³ / ₈ "	60 / 58 ³ / ₈ "
PML600	600						
PML1000	1000						
PML600R	600						
PML1200R	1200						
PML1500R	1500						

See our Specification Catalog for Pricing

CFM (Cubic Feet per Minute):
CFM is an acronym for "Cubic Feet per Minute". This is a measurement of air volume velocity and is often used in measuring air flow from heating or cooling diffusers. It is a rating attributed to fan size.

Model #	CFM Rating	Amps	Ducting	Suggested Use
PML600 (Internal Blower)	600	5.0, 110V	8" round	Standard range or small commercial range
PML1000 (Internal Blower)	1000	7.0, 110V	10" round	Commercial range up to 48" wide without grill
PML600R (External Blower Unit)	600	7.0, 110V	10" round	36" or smaller commercial range without grill
PML1200R (External Blower Unit)	1200	7.0, 110V	10" round	Any commercial range without grill
PML1500R (External Blower Unit)	1500	7.0, 110V	10" round	Any range with WOK and / or grill

* Note, 28³/₈" through 40³/₈" liners have (2) 50W halogen lights; 46³/₈" through 58³/₈" liners have (3) 50W halogen lights.

Wood Hood Model and Size	Size of Liner that Fits Hood / Actual Width of Liner					
	30 / 28 ³ / ₈ "	36 / 34 ³ / ₈ "	42 / 40 ³ / ₈ "	48 / 46 ³ / ₈ "	54 / 52 ³ / ₈ "	60 / 58 ³ / ₈ "
G, T	NA	36	42	48	54	60
I	NA	36	42	48	54	60
E, D	NA	36	42	48	54	60
W, O	NA	NA	NA	66	72	84, 90
H, L	NA	54	60	66	72	84
M, Q	30	36	42	48	54	60
S, J, A	33	39	45	51	57	63

The installation of Range Hood and Liner Ventilation Systems are subject to local building code construction guidelines. It is your responsibility to ensure that the Range Hood, Liner and Ventilator do meet your local building code standards.



WalzCraft.com



(Phone) 1-800-237-1326 7:00AM - 4:30PM CST (24 Hour Fax) 1-608-781-3667